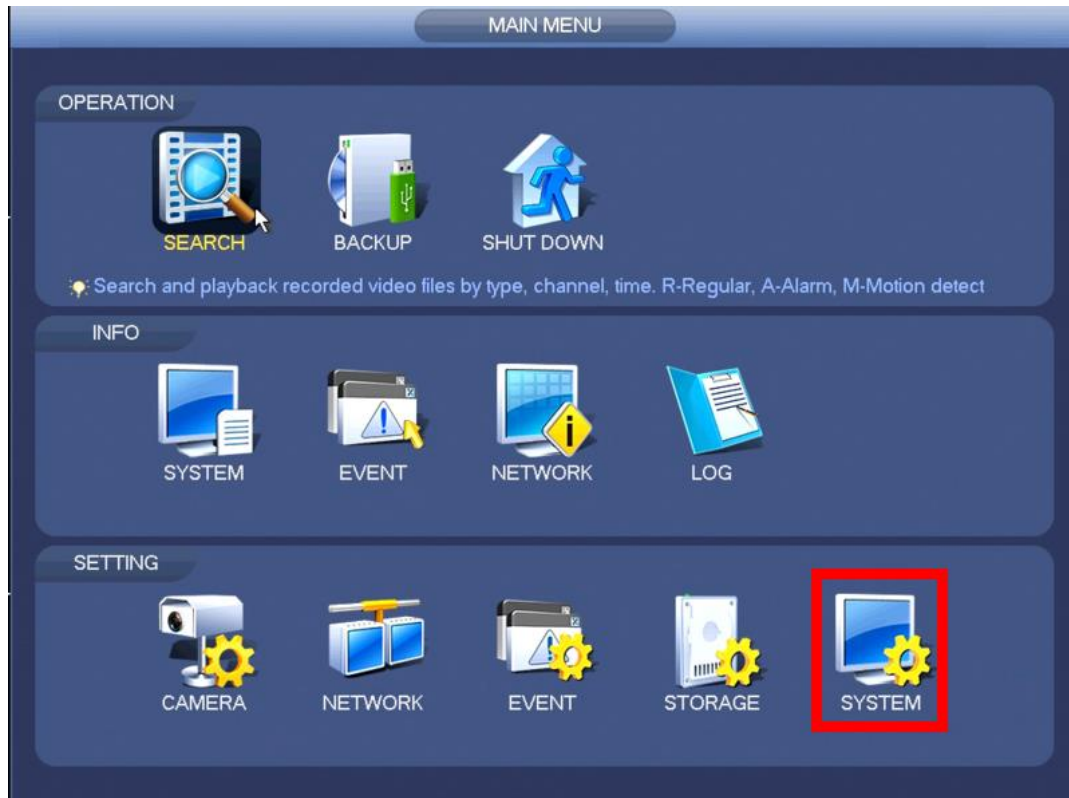




Disabling the login feature on NVR

1. Right click on the screen and select main menu. From the menu select "SYSTEM" in the bottom right hand corner



2. Next make sure that you are on the general tab of the System menu



3. With the General tabs highlighted, you should see the Auto Logout function in this menu. You can set a value between 0-60, the value is refereeing to how many minutes before the system logs you out. Setting this option to zero makes it so the only time you will need to enter the login information again is if the NVR is reset or loses power.

