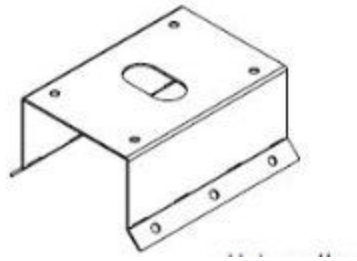


## Large PTZ Camera Mount MNT-PTZ-LRG-001 Instructions & description

The Large Camera Mount Bracket: Part # MNT-PTZ-LRG-001  
Can be used to mount the camera on a telephone pole or exterior corner of a building.



It is made of Stainless steel and supplied with 3/8" course thread track bolts and flange nuts.

The track bolts must be installed in the mount so that they project out toward the camera mount.



To install the Track bolts, use a 1/2" nut as a spacer, then pull the track bolt into the mount with the supplied 3/8" course flanged nuts.

The Camera bracket requires the four holes to be reamed to 25/64" to ensure a proper fit of the camera bracket to the Camera Mount Bracket: Part # MNT-PTZ-LRG-001



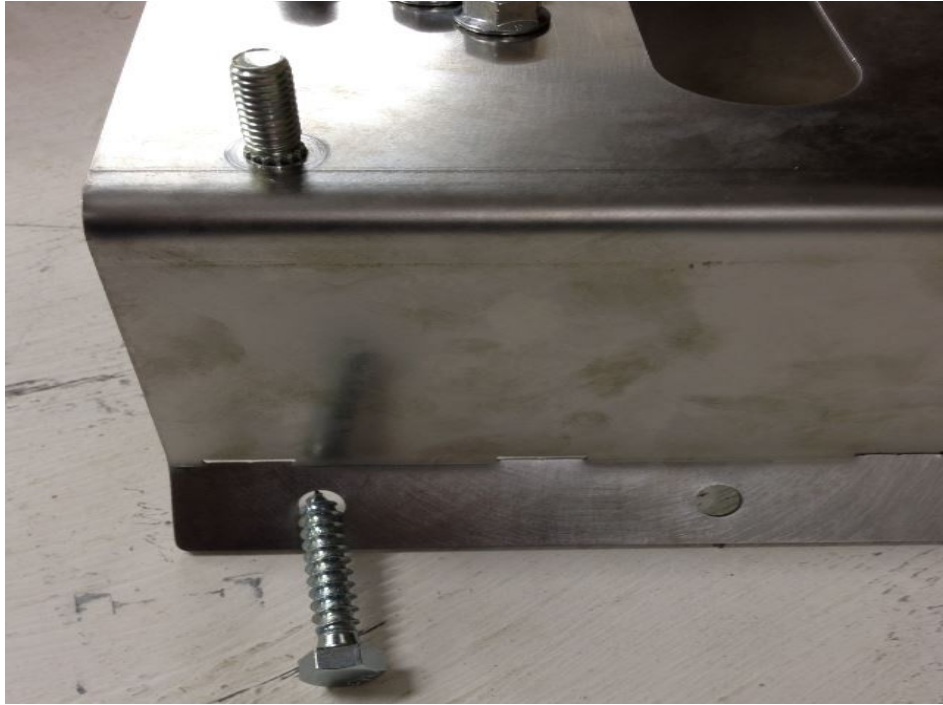
**Mount the bracket on the pole or wall before installing the camera.**





Two methods of attachment to a pole are available:

1. used 4 or 6, 3/8" Lag screws



2. 4 or 6 / large stainless adjustable tie straps





**Exterior Corner Mounting:**

The Camera Mount Bracket: Part # MNT-PTZ-LRG-001 is so designed that it will fit on a corner of a building. Use 2"X 3/8"lag screws to solidly mount it on an exterior corner.





### Flat Wall Mounting:

Large 3/8" hex self tapping lag screws are available for fastening the mount directly to a wall. It is recommended that if the Camera is being mounted directly to a wall, that 1" plywood backing plate be solidly attached to the wall, then the Camera attached to Plywood backing using 3/8" X 2" lag screws.

