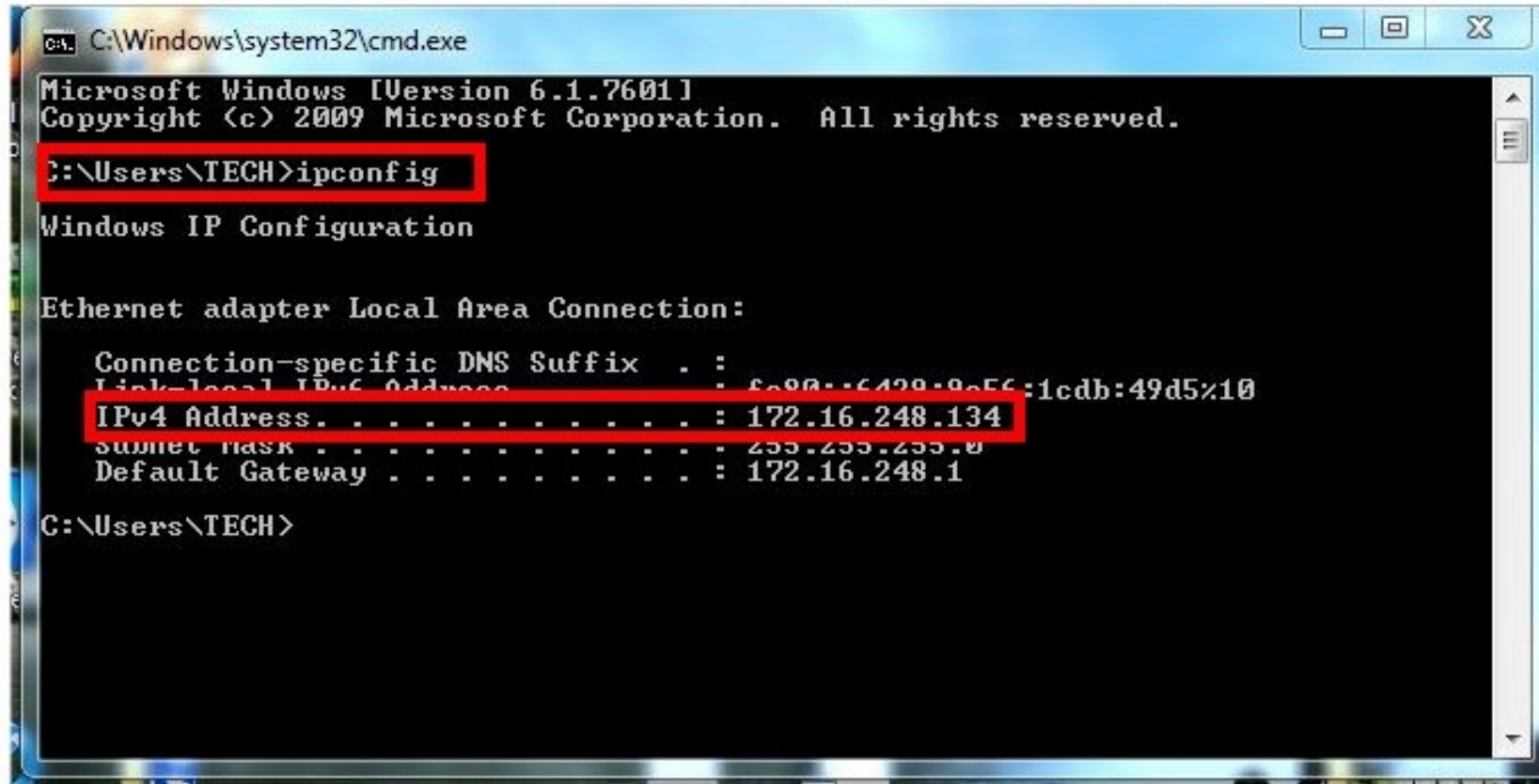


## To Find the IP Address or Range of your network



```
C:\Windows\system32\cmd.exe
Microsoft Windows [Version 6.1.7601]
Copyright (c) 2009 Microsoft Corporation. All rights reserved.

C:\Users\TECH>ipconfig

Windows IP Configuration

Ethernet adapter Local Area Connection:

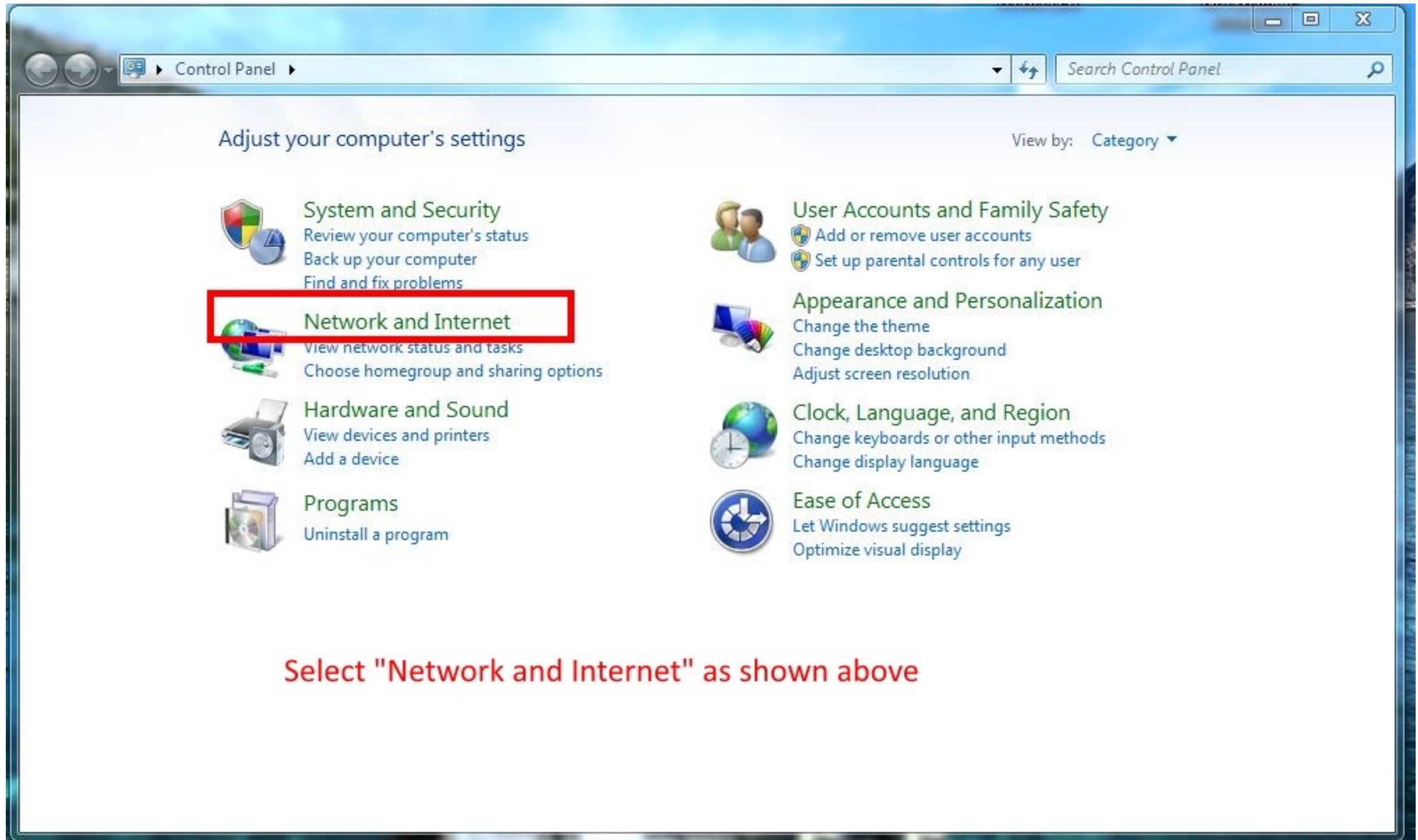
    Connection-specific DNS Suffix  . : 
    Link-local IPv6 Address . . . . . : fe80::6498:9c56:1cdb:49d5%10
    IPv4 Address. . . . . : 172.16.248.134
    Subnet Mask . . . . . : 255.255.255.0
    Default Gateway . . . . . : 172.16.248.1

C:\Users\TECH>
```

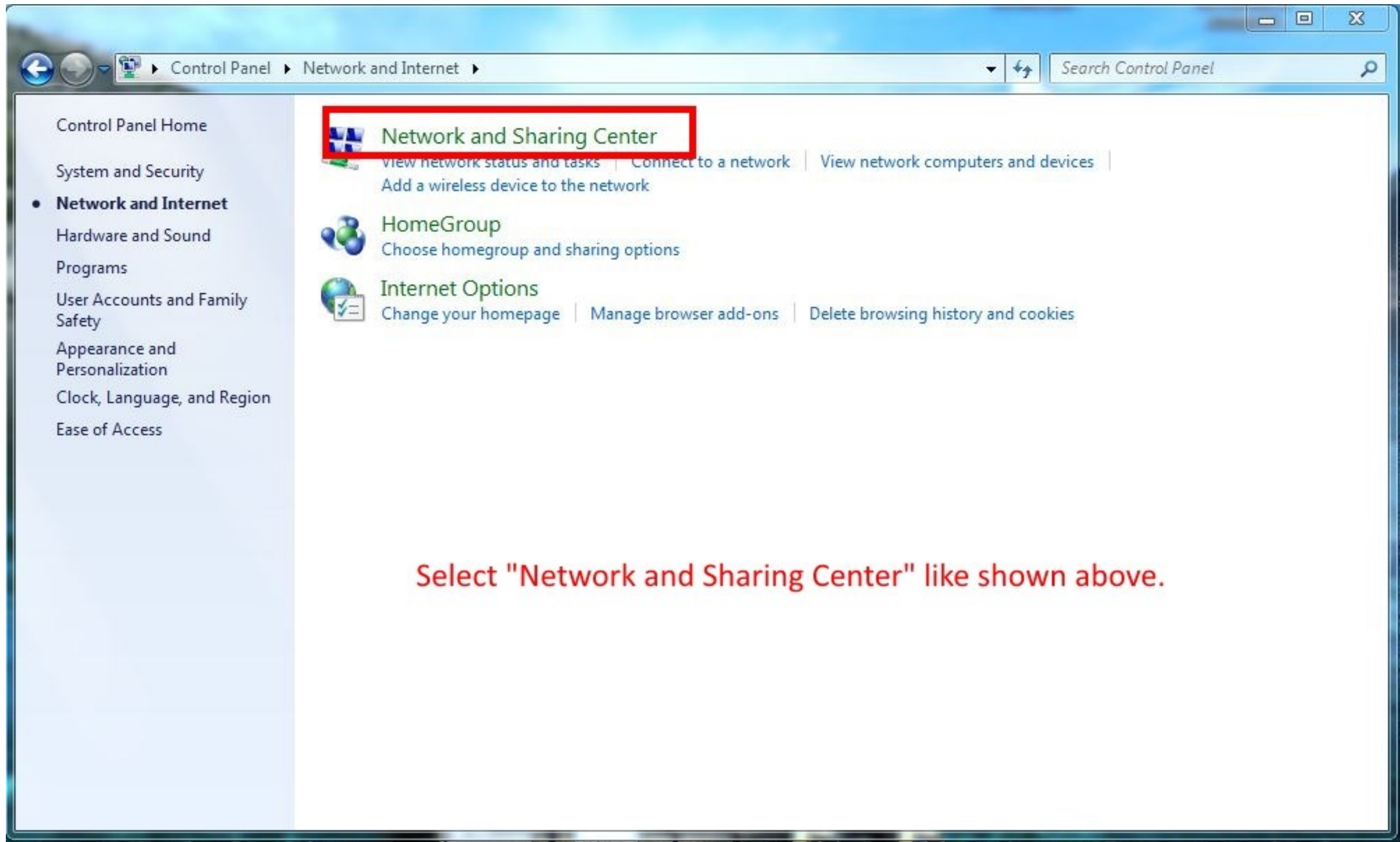
Open the start menu and search "cmd" then open the program.

Once opened, type in "ipconfig" and press enter.

In the Highlighted area you will find your IP range. The IP range is determined by the first 3 groups of numbers and not the 4th group  
Example... 172.16.248.??..



Select "Network and Internet" as shown above



Select "Network and Sharing Center" like shown above.



Control Panel Home

**Change adapter settings**

Change advanced sharing settings

See also

HomeGroup

Internet Options

Windows Firewall

## View your basic network information and set up connections



CORY-PC  
(This computer)



Network



Internet

[See full map](#)

View your active networks

[Connect or disconnect](#)



**Network**  
Work network

Access type: Internet  
Connections: Local Area Connection

Change your networking settings



[Set up a new connection or network](#)

Set up a wireless, broadband, dial-up, ad hoc, or VPN connection; or set up a router or access point.



[Connect to a network](#)

Connect or reconnect to a wireless, wired, dial-up, or VPN network connection.



[Choose homegroup and sharing options](#)

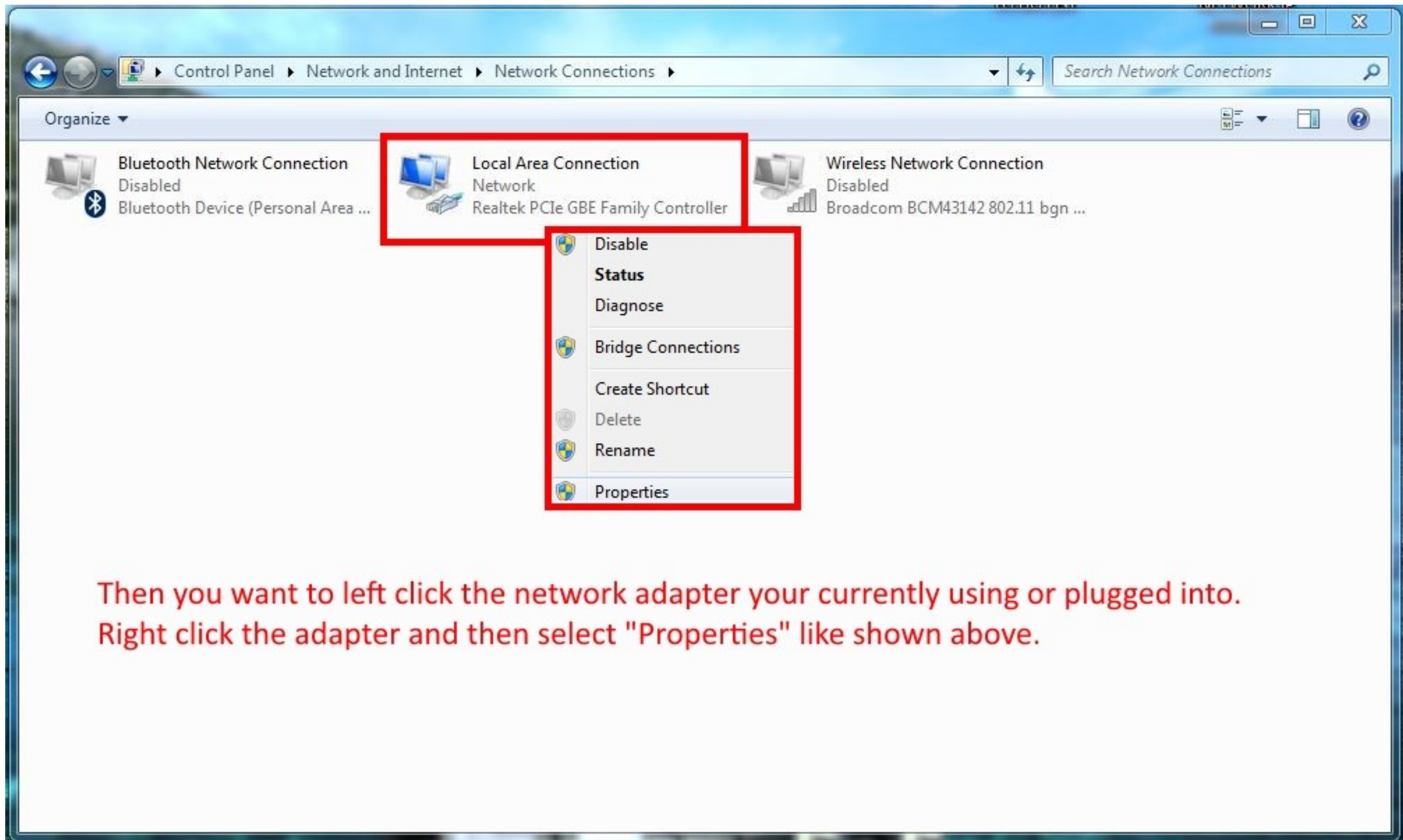
Access files and printers located on other network computers, or change sharing settings.



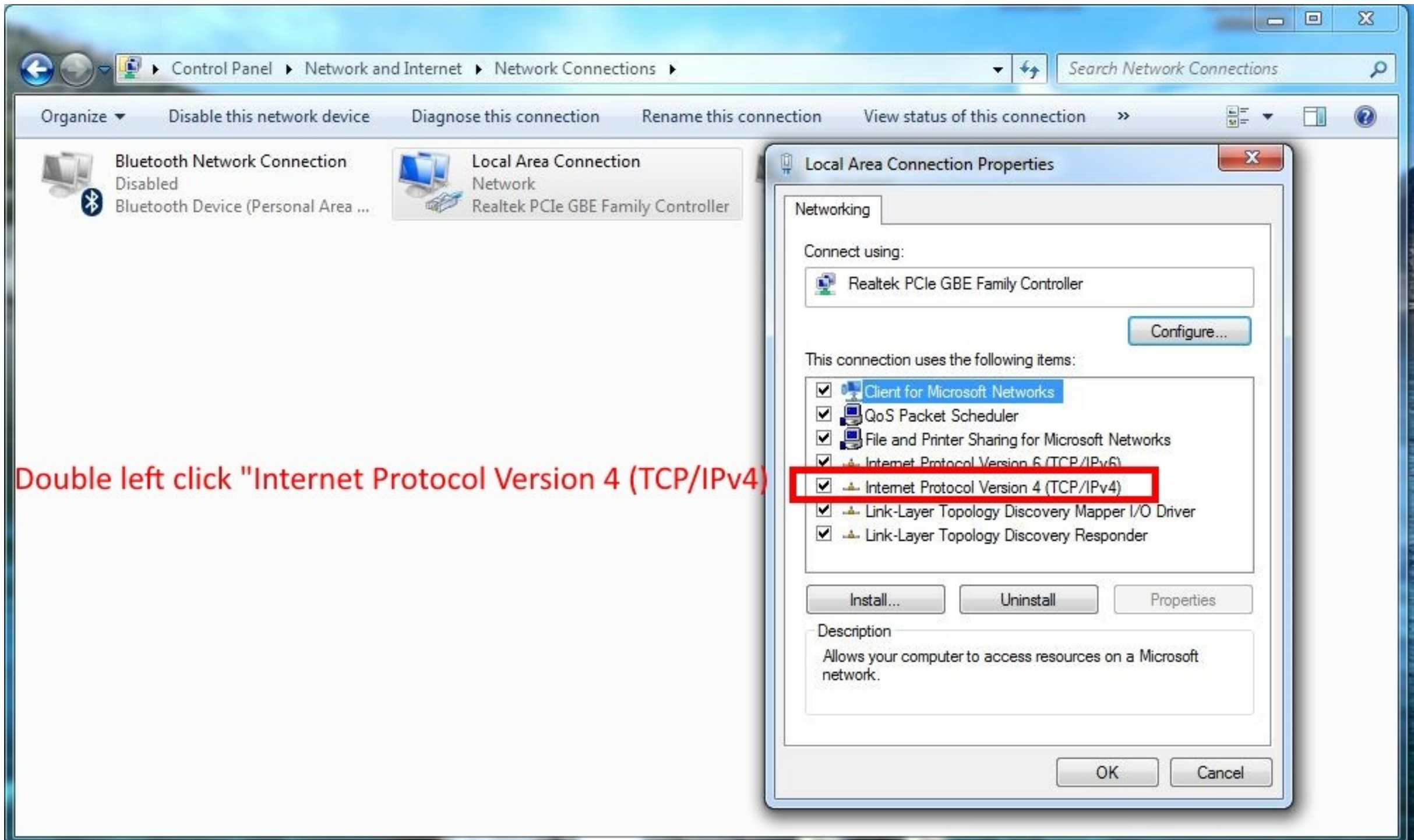
[Troubleshoot problems](#)

Diagnose and repair network problems, or get troubleshooting information.

**Then Select "Change adapter settings" like shown above**



Then you want to left click the network adapter your currently using or plugged into. Right click the adapter and then select "Properties" like shown above.



Double left click "Internet Protocol Version 4 (TCP/IPv4)"



Control Panel > Network and Internet > Network Connections

Organize | Disable this network device | Diagnose this connection | Rename this connection | View status of this connection

Bluetooth Network Connection Disabled  
Bluetooth Device (Personal Area ...)

Local Area Connection Network  
Realtek PCIe GBE Family Controller

**Now you can select "use the following IP Address"**

The Default IP address of the WiFi bridges and Cameras we use are in the IP Range of "192.168.1.???" so you need to set your IP address of your PC to something available within that range. (Usually a higher number). Anything 200-250 is usually ok. The "Subnet Mask" should be left the same, and the "Default Gateway" will always be the IP Range with a "1" as the fourth number section

Example... 192.168.1.1, 192.168.0.1, 199.199.199.1, 172.16.248.1

Then Once done click "OK" then go back to programming.

**Internet Protocol Version 4 (TCP/IPv4) Properties**

General

You can get IP settings assigned automatically if your network supports this capability. Otherwise, you need to ask your network administrator for the appropriate IP settings.

Obtain an IP address automatically

Use the following IP address:

IP address: 192 . 168 . 1 . 200

Subnet mask: 255 . 255 . 255 . 0

Default gateway: 192 . 168 . 1 . 1

Obtain DNS server address automatically

Use the following DNS server addresses:

Preferred DNS server: . . .

Alternate DNS server: . . .

Validate settings upon exit

Advanced...

OK Cancel

# EnGenius®



Search



IP Setting



Factory Default



Web



About

Device Name	Operation Mode	IP Address	System MAC Address	Firmware Vers...
EAP600	Wireless Client	172.16.248.53	00:02:6F:E8:F6:78	1.6.8
ENS500EXT	Access Point	10.10.10.10	88:DC:96:47:04:A4	1.5.77
ENS500EXT	Wireless Client	10.10.10.11	88:DC:96:46:B1:B2	1.5.77

This is the WiFi Bridge Search tool you can use to find your online bridges.

Please Contact ALSC directly to obtain this Search Tool.