

***Instructions for mounting small PTZ Cameras  
Using Part # MNT-PTZ-SM-001***



***Kit includes:***

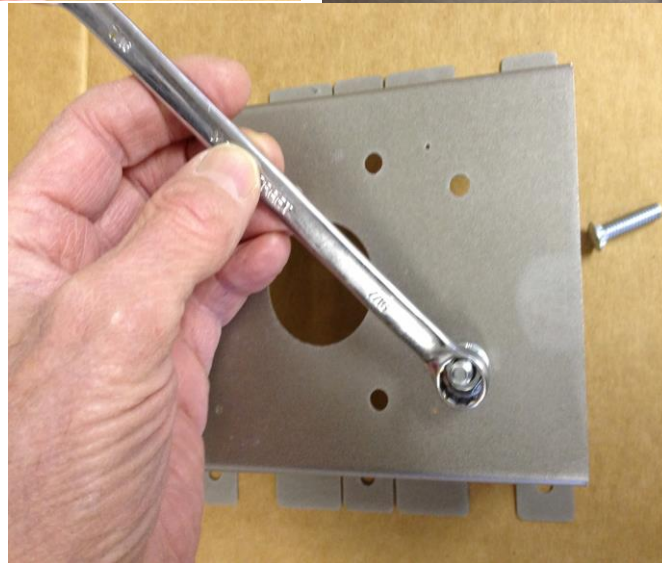
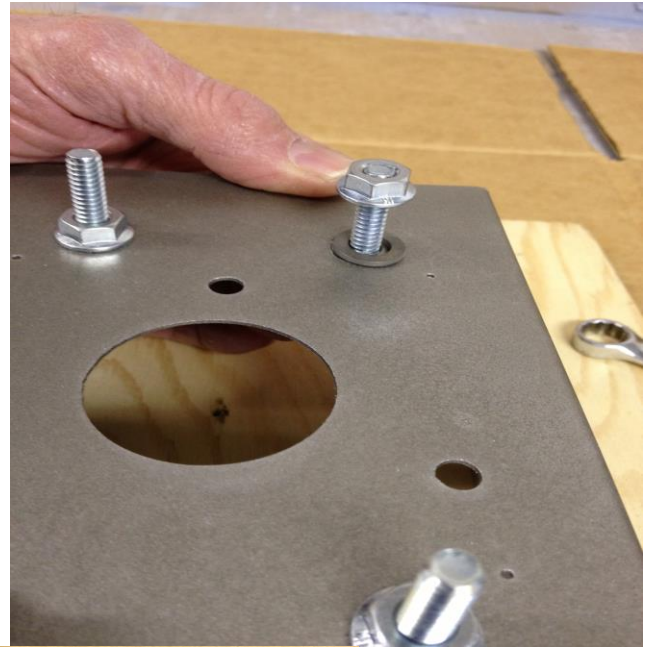
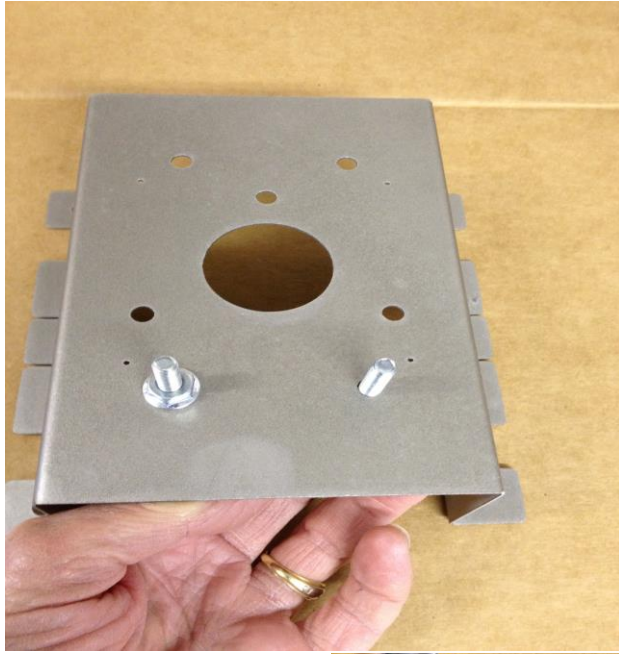
- (1) MNT-PTZ-SM-001 universal mount bracket (stainless)**
- (4) 1" X 1/4" track bolts for camera attachment**
- (4) 1/4" lock washer nuts**
- (1) 5/16" flat washer (for setting track bolts)**



*Instructions include the installation of the track bolts in the MNT-PTZ-SM-001 mount bracket for the mounting of the camera and examples of the various mountings methods.*

***Step #1*** *Installing track bolts for camera mounting:*

- *Choose the camera mount bolt pattern before installing track bolts.*
- *If a bolt pattern is not available drill 17/64” holes for other patterns.*
- *Install the track bolt from the inside of the mount and use a 5/16 flat washer (between the nut and mount base) to help draw the bolt into the 17/64” hole*
- *Use a wrench to tighten the nut thus pulling the track bolt into firm position.*



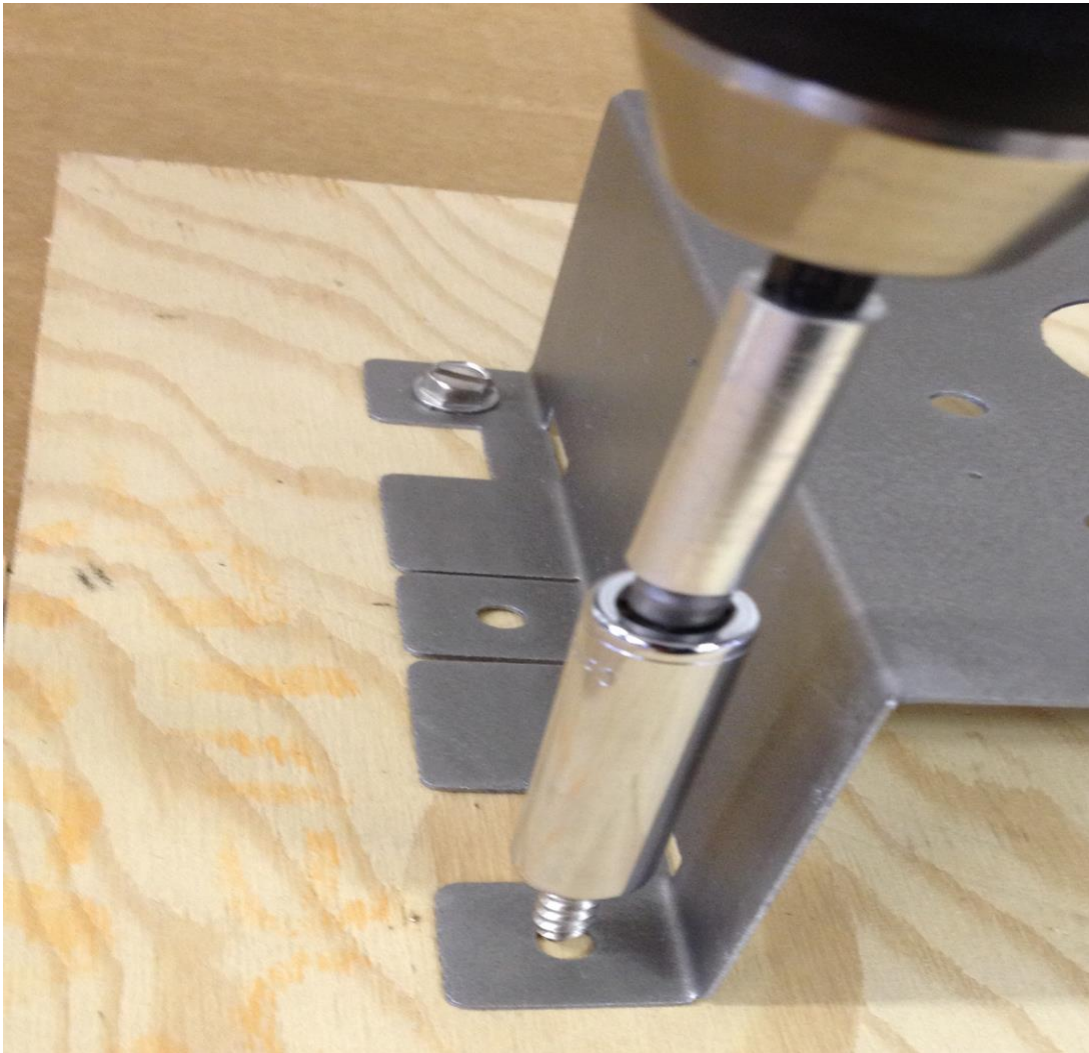
3

***Step #2*** The MNT-PTZ-SM-001 mount bracket can be used for the following applications:

- \*Flat Mounting***
- \*Corner Mounting***
- \*Pole Mounting***

***\* Flat mounting example: Installing # 14 or 1/4" self tapping hex head screws after track bolts installed (Plywood is only used for demonstration***

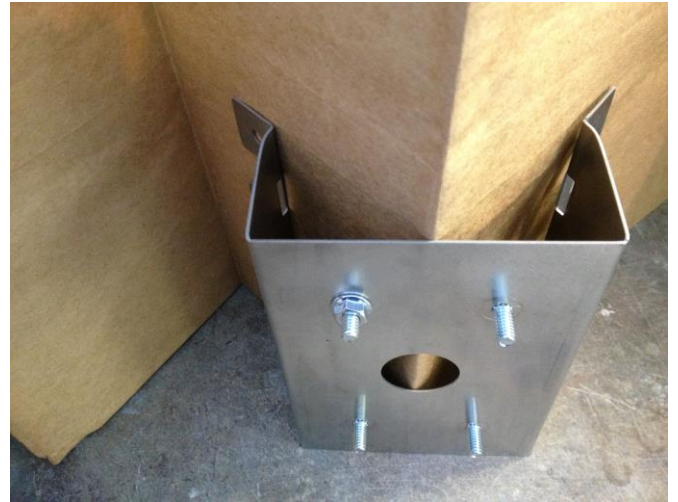
*purposes, not needed for installation. use six screws for a solid mounting into wall.)*



4

*\* Corner mounting example: Bending of mounting flanges in a vise to the appropriate angle is required (#14 or 1/4 " Dia. attachment screws required)*





***\* Pole mounting example:***

***Flanges bent to appropriate angle for pole Diameter***

***(use a Stainless large size hose clamps or self tapping screws # 14 or 1/4" )***



**5**

***Step # 3 After the MNT-PTZ-SM-001 mount bracket is fixed to the wall or pole, the camera can be attached to it using 1/4" nuts (supplied) The wiring can led through the hole or outside as necessary.***

*Example: (flat mount shown)*

